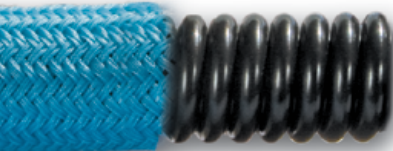


“PTFE” Hose Higher Pressure Applications

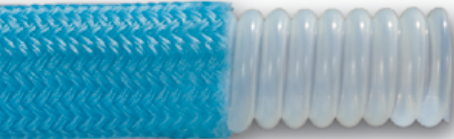
MultiFlex™ combines excellent flexibility with a high pressure rating. The seamless open pitch, spiral PTFE convolutions facilitate cleaning because they're self-draining. MultiFlex is perfect for demanding high purity and chemical applications. Available in sizes 1/2" to 3"



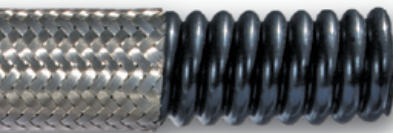
316 Stainless Steel Braid
Pure PTFE



Polypropylene Braid
Static - Dissipating PTFE



Polypropylene Braid
Pure PTFE



316 Stainless Steel Braid
Static - Dissipating PTFE

MULTIFLEX™ ADVANTAGES

Corrosion Resistant

PTFE is fully resistant to the broadest range of industrial chemicals and has a zero corrosion rate with lower life cycle costs.

Cleanable

Non-Stick, low porosity tube is self cleaning and does not trap bacteria and can be cleaned with steam, detergents, caustics or solvents.

Sanitary

FDA- approved materials meet or exceed Pharmacopoeia class VI and 3A standards.

Compatible

Will not contaminate or impart a taste, color or odor to any media.

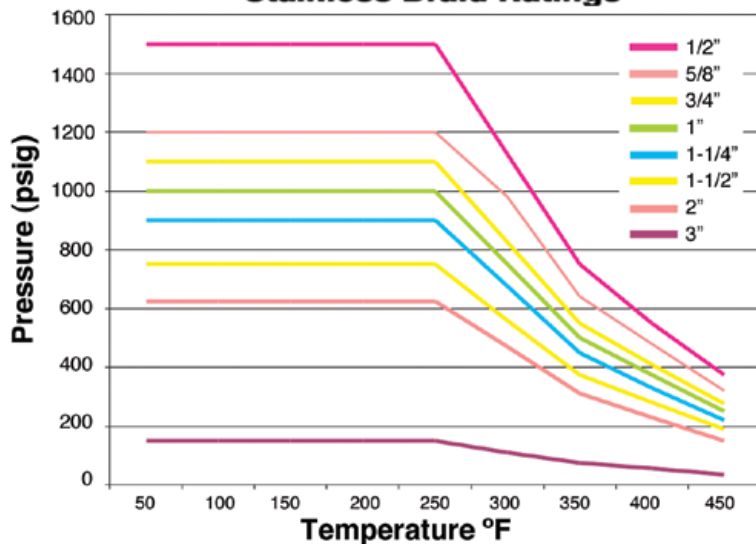
Flexible

Ultra flexible engineered design that resists cracking and stress corroding.

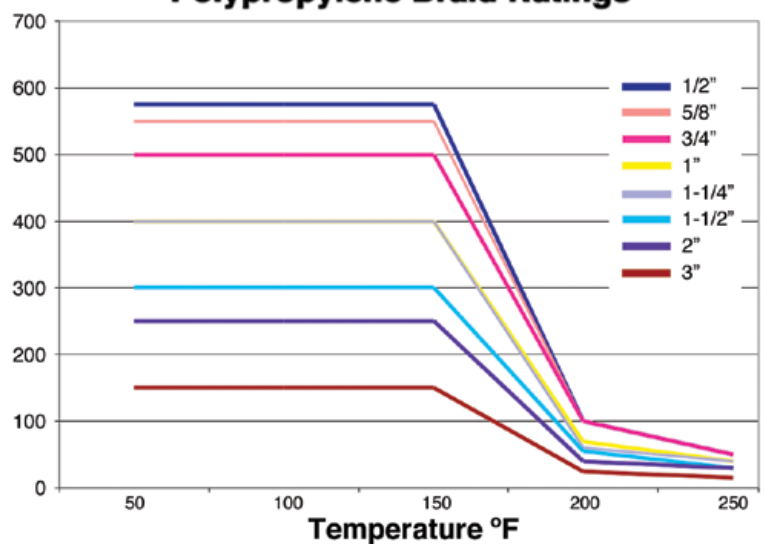
Durable

Engineered for extended use in hostile environments involving severe chemical, thermal, and mechanical stresses. Does not suffer from aging or embrittlement like rubber even with extreme thermal cycling.

MultiFlex™ & ProFlex™ Stainless Braid Ratings



MultiFlex™ & ProFlex™ Polypropylene Braid Ratings



PUREFLEX FITTINGS

THREADED FITTINGS



STYLE 03 Male Pipe (NPT) Hex



STYLE 04 Male Pipe (NPT)



STYLE 07 Female CAM Lock 'D'



STYLE 17 Female CAM Lock 'D' Reducer



STYLE 31 O-Ring Female Swivel 'D'



STYLE 06 Female Pipe (NPT)



STYLE 30 JIC Female Swivel



STYLE 27 Female CAM Lock 'D' (PFA Encapsulated)



STYLE 08 Male CAM Lock 'E'



STYLE 38 Compression Adapter



STYLE 40 Sanitary (Tri-Clamp)



STYLE 45 Bevel Seat Female



STYLE 05 Flange Retainer P Series Flange Retainer



STYLE 33 Male Union (NPT)



STYLE 36 Female Union (NPT)



STYLE 28 Male CAM Lock 'E' (PFA Encapsulated)



STYLE 20 Male Flange Adapter (PFA Encapsulated)



STYLE 39 Compression Connector with Nut and Ferrule



STYLE 41 Sanitary Step-Up



STYLE 48 I-Line Male



STYLE 29 Flare Thru Flange (UltraFlex hose only)



STYLE 37 Female Swivel NPSH



JIC/ NPT Adapter with PTFE Seal



STYLE 21 Female Flange Adapter (PTFE Encapsulated)



STYLE 02 CAM Spool Adapter



STYLE 18 Tube Butt weld



STYLE 42 Sanitary Mini



STYLE 49 I-Line Female



STYLE 22 CAM Spool Adapter (PFA Encapsulated)



STYLE 19 Pipe Butt weld



STYLE 44 Sanitary X Male Cam

CNC Machining

PureFlex has (24) CNC machining centers and manufactures the most diverse fitting and collar selection in the industry. Because of its machining expertise, PureFlex can also offer a wide range of materials including; Stainless steel, carbon steel, Monel, Hastelloy, titanium, solid PVDF, solid Polypropylene and any other plastic or alloy requested.



STYLE 11 Splice



OPTIONS

Hose Cover Options

- 1 **SCUFF SLEEVE**
Protects hose exterior from damage when dragged over rough surfaces
- 2 **FIRE SLEEVE**
Protects hose from extreme exterior temperatures. Can be used as insulation and protects personnel from extreme interior temperatures
- 3 **POLYOLEFIN**
Provides a smooth, cleanable covering over braided hose. Many colors available
- 4 **ARMOR GUARD**
Protects hose from kinking by not allowing it to exceed its bend radius
- 5 **SPRING GUARD**
Provides kink resistance and protects hose from damage when dragged over rough surfaces
- 6 **HDPE ARMOR**
Provides kink and wear protection during rough handling. Available in (8) colors for color coding and is the only protective cover that can be installed on an existing assembly.



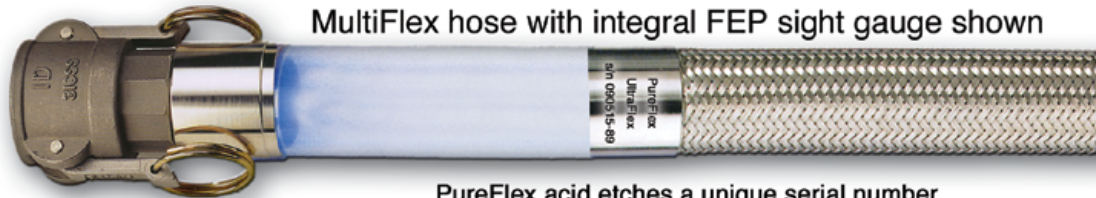
Electrically Heated Hoses & Controls



Consult Factory for more information

Custom Fabricated Assemblies

MultiFlex hose with integral FEP sight gauge shown



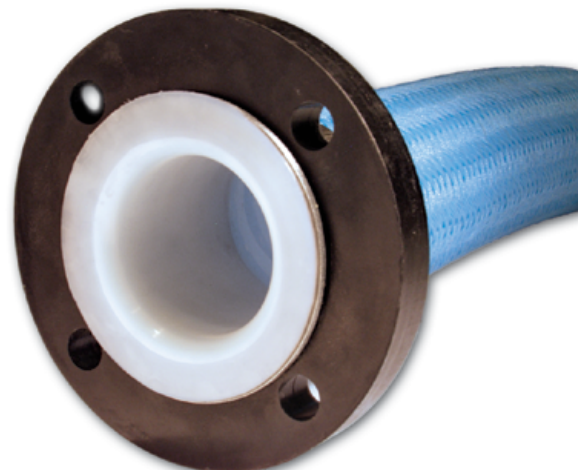
PureFlex acid etches a unique serial number on every assembly 3/4" and larger. Other special tagging available



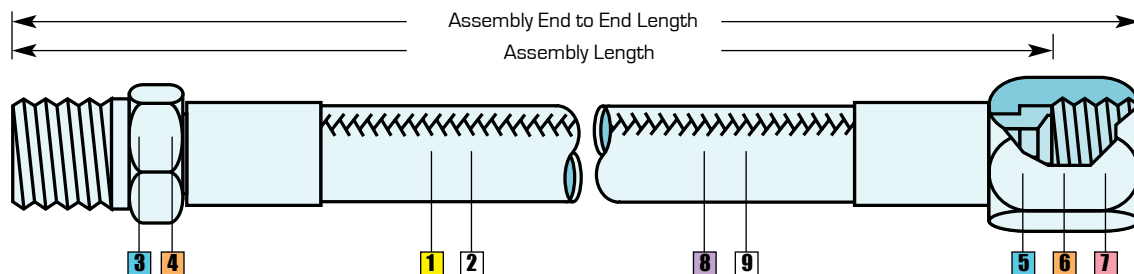
Durcor-62™ Composite Flanges



- **Strong As Steel**
- 1/4 The Weight Of Stainless
- Class 150 Rated
- ANSI B16.5
- (-)60°F to (+)300°F
- Lower Cost Than 316s.s.
- Lower Transportation Cost
- Lower Installed Cost
- Lower Life Cycle Cost
- **Zero Corrosion Rate**
- 5 Year Warranty



HOW TO ORDER



ULTRAFLEX HOSE ASSEMBLY NUMBERING SYSTEM

Steps to order a 1" UltraFlex assembly with a length of 12", 316SS male NPT one end, 316SS JIC other end. No options.

Sample part number: U16J036306001200



STEP A1 Hose Series

U = UltraFlex
M = MultiFlex
P = ProFlex

STEP 1 Determine I.D. of UltraFlex tube: 16 = 1"

08 = 1/2"
12 = 3/4"
16 = 1"
24 = 1-1/2"
32 = 2"
48 = 3"
64 = 4"

STEP 2 Determine hose product code: J

U = Bare
J = SS Braid
P = PP Braid
S = Special

STEP 3 Determine fitting style of 1st end: 03 = Male NPT

Threaded
03 = Male pipe hex NPT
04 = Male pipe NPT
06 = Female pipe NPT
30 = JIC female swivel
33 = Male union (NPT)
36 = Female union (NPT)
37 = Female swivel NPSH
Flanges
05 = Flange retainer
15 = Flange retainer P-series
25 = Enc. flange retainer
29 = Flare thru flange
Camlock
07 = Female cam lock "D"
27 = Enc. female cam lock "D"
08 = Male cam lock "E"
28 = Enc. male cam lock "E"
Compression
31 = O-ring female swivel "D"
38 = Compression adapter
39 = Compression connector
w/nut & ferrule

Buttweld
18 = Tube buttweld
19 = Pipe buttweld
Sanitary
40 = Sanitary tri-clamp
40U = Sanitary flare thru
41 = Sanitary step-up
42 = Sanitary mini
48 = H-line male
49 = H-line female
45 = Bevel seat female
46 = Bevel seat male

STEP 4 Determine fitting material: 6 = 316SS

4 = 304SS
6 = 316SS
C = Carbon steel
T = TFE encapsulated
H = Hastelloy
M = Monel
A = Alloy 20
K = Kynar
P = Polypropylene

STEP 5 Determine fitting style of 2nd end: 30 = JIC

Threaded
03 = Male pipe hex NPT
04 = Male pipe NPT
06 = Female pipe NPT
30 = JIC female swivel
33 = Male union (NPT)
36 = Female union (NPT)
37 = Female swivel NPSH
Flanges
05 = Flange retainer
15 = Flange retainer P-series
25 = Enc. flange retainer
29 = Flare thru flange
Camlock
07 = Female cam lock "D"
27 = Enc. female cam lock "D"
08 = Male cam lock "E"
28 = Enc. male cam lock "E"
Compression
31 = O-ring female swivel "D"
38 = Compression adapter
39 = Compression connector
w/nut & ferrule
Buttweld
18 = Tube buttweld
19 = Pipe buttweld
Sanitary
40 = Sanitary tri-clamp
40U = Sanitary flare thru
41 = Sanitary step-up
42 = Sanitary mini
48 = H-line male
49 = H-line female
45 = Bevel seat female
46 = Bevel seat male

STEP 6 Determine fitting material: 6 = 316SS

4 = 304SS
6 = 316SS
C = Carbon steel
T = TFE encapsulated
H = Hastelloy
M = Monel
A = Alloy 20
K = Kynar
P = Polypropylene

STEP 7 Determine flange material: 0 = None

0 = None
D = Ductile iron
C = Carbon steel
4 = 304SS
6 = 316SS
K = Kynar
P = Polypropylene

STEP 8 Determine overall length of UltraFlex hose in inches: 0120 = 12"

Last digit in 1/8th increments.

STEP 9 Determine options: 0 = None

0 = None
B = Conductive hose liner
Z = 300# Flg
L = Locking female cam
S = Spring guard
A = Armor guard
F = Firesleeve
P = Polyolefin cover
T = TFE shrink cover
H = Hypalon cover
N = Nylon scuff guard
D = HDPE Armor

PureFlex®, Inc. information is based on technical data and testing that PureFlex®, Inc. believes to be reliable. It is intended for use by persons having technical skill, at their own discretion and risk. Since conditions of product are outside PureFlex®, Inc. control, PureFlex®, Inc. makes no warranties, express or implied, and assumes no liability in connection with any use of this information. PureFlex®, MultiFlex™, ProFlex™, are trademarks of PureFlex®, Inc. Kynar® is a registered trademark of ELF Atochem. All products are made in U.S.A. Monel® is a registered trademark of Huntington Alloys. Hastelloy® is a registered trademark of Cabot Corporation.

4855 Broadmoor Ave.
Kentwood, MI 49512
Phone: (616) 554-1100
Fax: (616) 554-3633
Web: www.pureflex.com



0312-092817